

**STANDARD ARRIVAL CHART  
INSTRUMENT(STAR) - ICAO**

TRANSITION ALT 14 000  
TRANSITION LVL FL 140

SACHEON APP 135.4  
YEOSU TWR 122.5  
240.9

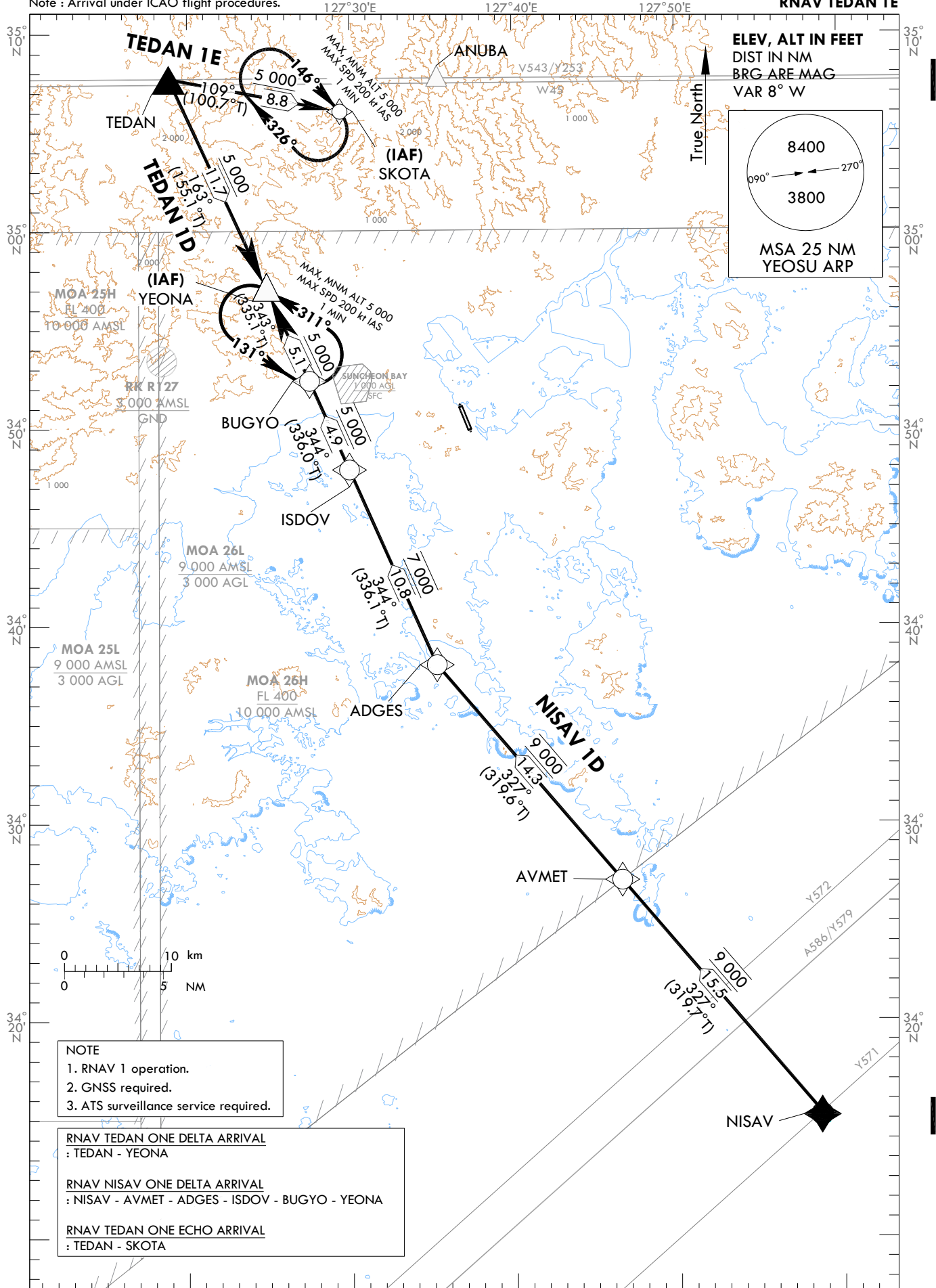
YEOSU/Yeosu(RKJY)

RWY 17

RNAV TEDAN 1D, RNAV NISAV 1D

RNAV TEDAN 1E

Note : Arrival under ICAO flight procedures.



Change : Information of TEDAN and NISAV(reporting requirement).

YEOSU/Yeosu(RKJY)

RWY 17

RNAV TEDAN 1D, RNAV NISAV 1D

RNAV TEDAN 1E, HOLDING PROCEDURE

## AERONAUTICAL DATA TABULATION

## Standard Instrument Arrival Procedure Coding Tables

## RNAV TEDAN 1D

Serial Number	Path Descriptor	Waypoint Identifier	Fly-over	Course/Track °M(°T)	Distance (NM)	Turn direction	Altitude (ft)	Speed (kt)	Coordinates	VPA/ RDH	Navigation specification	Remarks
001	IF	TEDAN	-	-	-	-	-	-	35°07'43.8"N 127°18'52.1"E	-	RNAV 1	-
002	TF	YEONA	-	163(155.1)	11.7	-	+5 000	-	34°57'03.8"N 127°24'52.1"E	-	RNAV 1	IAF

## RNAV NISAV 1D

Serial Number	Path Descriptor	Waypoint Identifier	Fly-over	Course/Track °M(°T)	Distance (NM)	Turn direction	Altitude (ft)	Speed (kt)	Coordinates	VPA/ RDH	Navigation specification	Remarks
001	IF	NISAV	-	-	-	-	-	-	34°15'19.1"N 127°58'35.0"E	-	RNAV 1	-
002	TF	AVMET	-	327(319.7)	15.5	-	@9 000	-	34°27'07.6"N 127°46'29.4"E	-	RNAV 1	-
003	TF	ADGES	-	327(319.6)	14.3	-	@9 000	-	34°38'03.0"N 127°35'14.0"E	-	RNAV 1	-
004	TF	ISDOV	-	344(336.1)	10.8	-	@7 000	-	34°47'56.0"N 127°29'55.0"E	-	RNAV 1	-
005	TF	BUGYO	-	344(336.0)	4.9	-	@5 000	-	34°52'26.0"N 127°27'29.0"E	-	RNAV 1	-
006	TF	YEONA	-	343(335.1)	5.1	-	+5 000	-	34°57'03.8"N 127°24'52.1"E	-	RNAV 1	IAF

## RNAV TEDAN 1E

Serial Number	Path Descriptor	Waypoint Identifier	Fly-over	Course/Track °M(°T)	Distance (NM)	Turn direction	Altitude (ft)	Speed (kt)	Coordinates	VPA/ RDH	Navigation specification	Remarks
001	IF	TEDAN	-	-	-	-	-	-	35°07'43.8"N 127°18'52.1"E	-	RNAV 1	-
002	TF	SKOTA	-	109(100.7)	8.8	-	+5 000	-	35°06'04.9"N 127°29'24.2"E	-	RNAV 1	IAF

## HOLDING PROCEDURE

Holding Identification	Path Descriptor	Waypoint Identifier	Fly-over	Course/Track °M(°T)	Time (min)	Turn direction	Altitude (ft)	Speed (kt)	Coordinates	VPA/ RDH	Navigation specification	Remarks
RNAV TEDAN 1D	HM	YEONA	Y	311(302.6)	1	L	@5 000	-200	34°57'03.8"N 127°24'52.1"E	-	RNAV 1	-
RNAV NISAV 1D	HM	YEONA	Y	311(302.6)	1	L	@5 000	-200	34°57'03.8"N 127°24'52.1"E	-	RNAV 1	-
RNAV TEDAN 1E	HM	SKOTA	Y	146(138.0)	1	R	@5 000	-200	35°06'04.9"N 127°29'24.2"E	-	RNAV 1	-

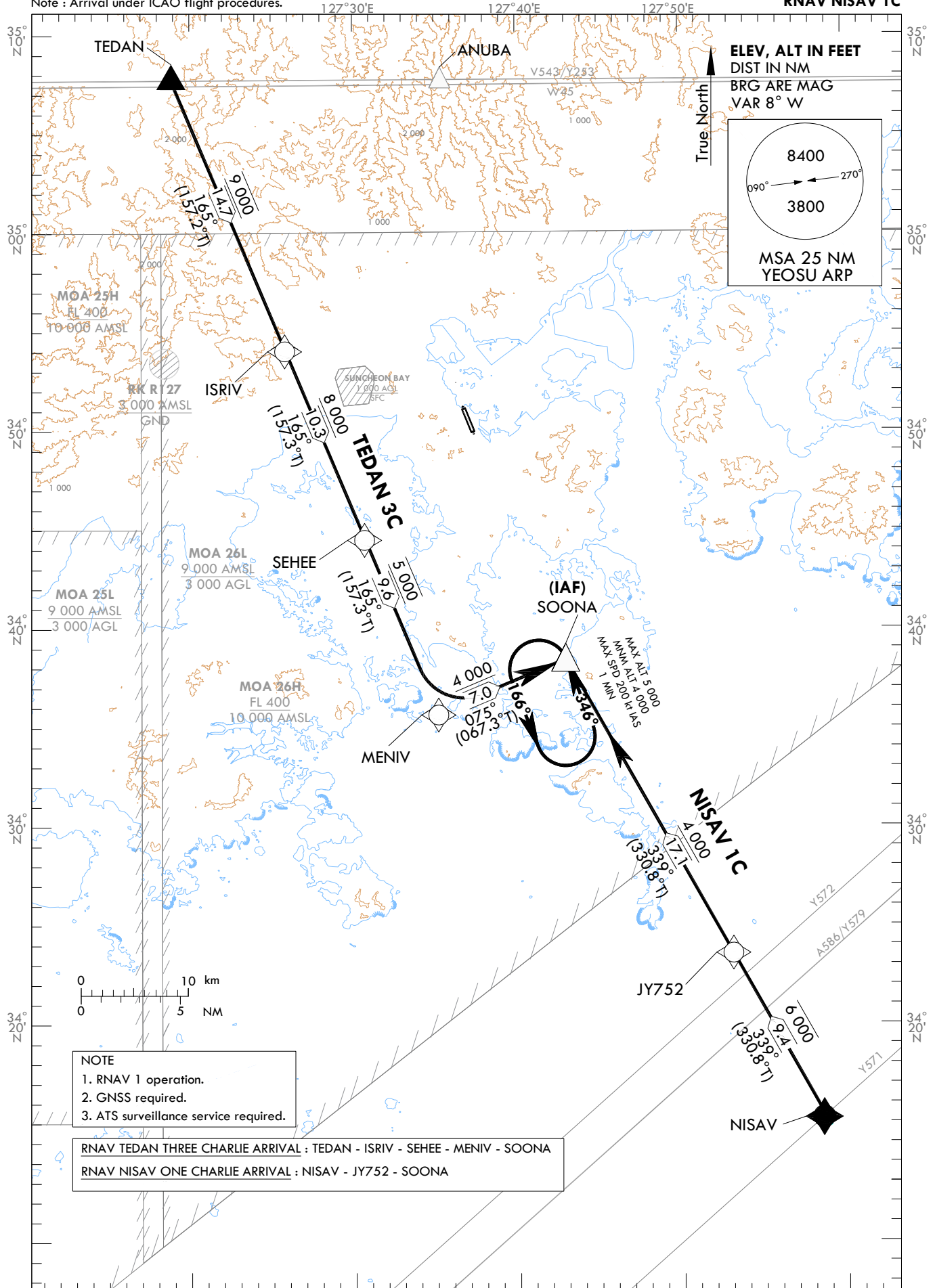
**STANDARD ARRIVAL CHART  
INSTRUMENT(STAR) - ICAO**

TRANSITION ALT 14 000  
TRANSITION LVL FL 140

SACHEON APP 135.4  
YEOSU TWR 122.5  
240.9

**YEOSU/Yeosu(RKJY)**  
RWY 35  
RNAV TEDAN 3C  
RNAV NISAV 1C

Note : Arrival under ICAO flight procedures.



Change : Information of TEDAN and NISAV(reporting requirement).

YEOSU/Yeosu(RKJY)  
RWY 35RNAV TEDAN 3C, RNAV NISAV 1C  
HOLDING PROCEDURE

## AERONAUTICAL DATA TABULATION

## Standard Instrument Arrival Procedure Coding Tables

## RNAV TEDAN 3C

Serial Number	Path Descriptor	Waypoint Identifier	Fly-over	Course/Track °M(°T)	Distance (NM)	Turn direction	Altitude (ft)	Speed (kt)	Coordinates	VPA/ RDH	Navigation specification	Remarks
001	IF	TEDAN	-	-	-	-	-	-	35°07'43.8"N 127°18'52.1"E	-	RNAV 1	-
002	TF	ISRIV	-	165(157.2)	14.7	-	@9 000	-	34°54'10.0"N 127°25'48.0"E	-	RNAV 1	-
003	TF	SEHEE	-	165(157.3)	10.3	-	+8 000	-	34°44'37.0"N 127°30'39.0"E	-	RNAV 1	-
004	TF	MENIV	-	165(157.3)	9.6	-	@5 000	-	34°35'46.2"N 127°35'07.9"E	-	RNAV 1	-
005	TF	SOONA	-	075(067.3)	7.0	-	+4 000	-	34°38'27.5"N 127°42'56.0"E	-	RNAV 1	IAF

## RNAV NISAV 1C

Serial Number	Path Descriptor	Waypoint Identifier	Fly-over	Course/Track °M(°T)	Distance (NM)	Turn direction	Altitude (ft)	Speed (kt)	Coordinates	VPA/ RDH	Navigation specification	Remarks
001	IF	NISAV	-	-	-	-	-	-	34°15'19.1"N 127°58'35.0"E	-	RNAV 1	-
002	TF	JY752	-	339(330.8)	9.4	-	-6 000	-	34°23'33.2"N 127°53'02.0"E	-	RNAV 1	-
003	TF	SOONA	-	339(330.8)	17.1	-	+4 000	-	34°38'27.5"N 127°42'56.0"E	-	RNAV 1	IAF

## HOLDING PROCEDURE

Holding Identification	Path Descriptor	Waypoint Identifier	Fly-over	Course/Track °M(°T)	Time (min)	Turn direction	Altitude (ft)	Speed (kt)	Coordinates	VPA/ RDH	Navigation specification	Remarks
RNAV TEDAN 3C	HM	SOONA	Y	346(338.5)	1	L	+4 000 -5 000	-200	34°38'27.5"N 127°42'56.0"E	-	RNAV 1	-
RNAV NISAV 1C	HM	SOONA	Y	346(338.5)	1	L	+4 000 -5 000	-200	34°38'27.5"N 127°42'56.0"E	-	RNAV 1	-